

Using Disposable Sharps Safely

Information for patients

NEEDLES, SYRINGES & LANCETS

Used needles and syringes can harm others and spread diseases.

Never share syringes and needles. Follow the advice your doctor, nurse or pharmacist gives you about safe disposal.

STORAGE

Keep all your needles and glucose monitoring equipment clean, bloodstain-free and out of reach of children at all times.

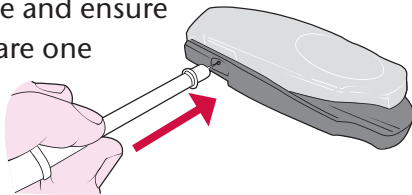
Here is an easy way to remember what to do with your injecting and monitoring equipment:

- Store safely
- Hygienic equipment
- Ask for clipping device
- Rigid sealable/lidded container
- Put in general waste bin
- Safe disposal

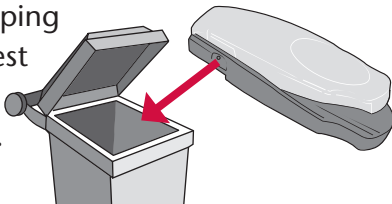
CLIPPING

Always use a needle clipping device incorporating a container (BD Safe-Clip) to clip the needle off your syringe.

Remember to ask your GP to prescribe a clipping device and ensure you have a spare one available at all times.



Always push the needle into the needle clipping device as far as it will go before breaking it off. When full, dispose of the needle clipping device with the rest of your general household waste.



Using disposable sharps safely 5

NHS Lanarkshire - for local services and the latest health news visit www.nhslanarkshire.org.uk
NHS Lanarkshire General
Enquiry Line: 0300 3030 243

NHS inform - The national health information service for Scotland.
www.nhsinform.co.uk
Tel No: 0800 22 44 88

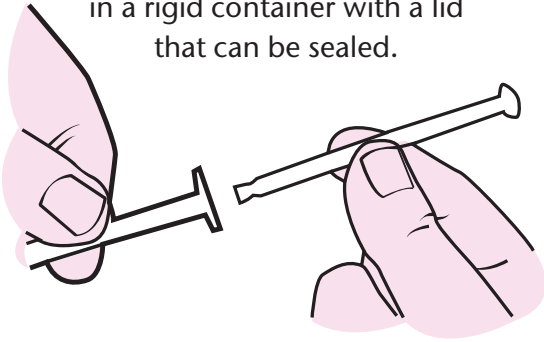
If you need this information in another language or format, please contact the NHS Lanarkshire General Enquiry Line on 0300 3030 243 or e-mail info@lanarkshire.scot.nhs.uk

'Using Disposable Sharps Safely' has been produced with the input and agreement of North and South Lanarkshire Councils.

Pub. date:	July 2016
Review date:	July 2018
Issue No:	01
Dept:	Public Health

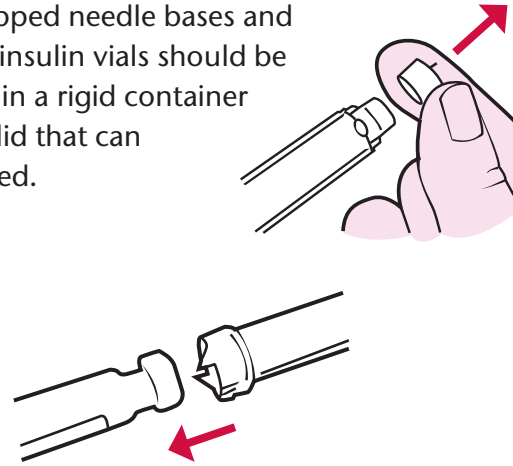
DISPOSAL OF SYRINGE

After clipping the needle (see page 5 of leaflet) remove the plunger from the syringe and place both parts in a rigid container with a lid that can be sealed.



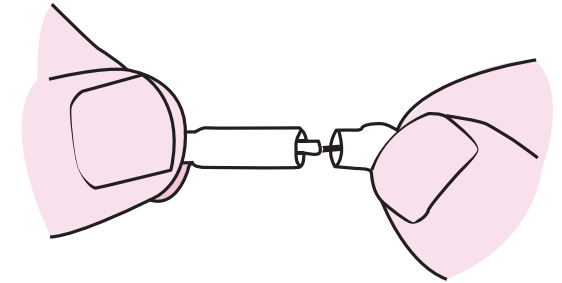
DISPOSAL OF INSULIN PEN EQUIPMENT

The clipped needle bases and empty insulin vials should be placed in a rigid container with a lid that can be sealed.

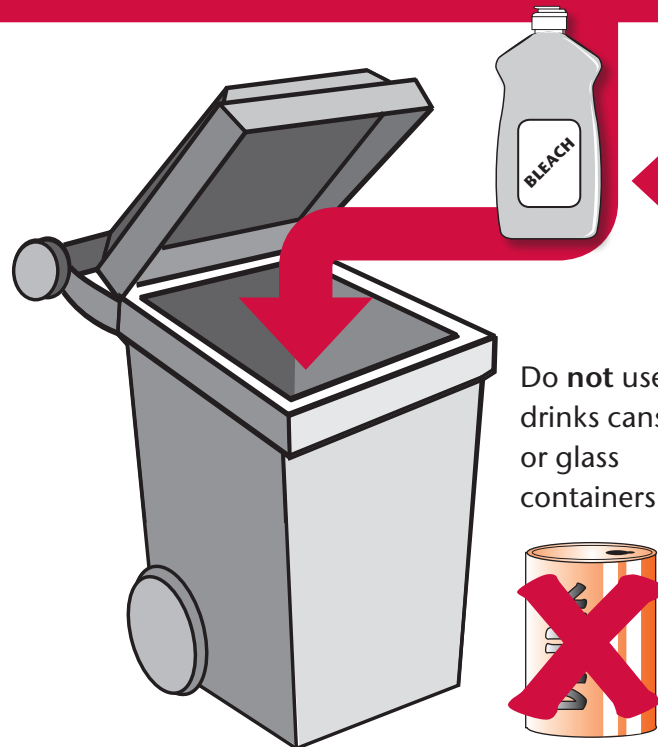


DISPOSAL OF LANCETS

After using lancets make sure you press the point firmly into the lancet cover before disposing of as detailed for syringes (far left).



If you have been supplied with a **yellow sharps container**, this **should not** be put in your general waste bin. Return it to your GP Practice.



REMEMBER

Don't overfill the container you are using for disposal.

To store the containers safely in the house prior to disposal.

Before disposal ensure that the lid of the container is tightly closed and then seal with a strong adhesive tape for additional safety.

Dispose of the sealed container through your general household waste (not recycling).